

INSTRUCTION MANUAL

LED WATERPROOF FITTING



02 YEAR
WARRANTY*
IP65
RATING

TECHNICAL DATA:

MODEL	SKU	MAX.WATTS	BEAM ANGLE	LIFE SPAN	MATERIAL	UNIT SIZE	INPUT VOLTAGE
VT-12004	7882 7883	2x10W Tube Not included	120°	20,000 Hours	PS+HIPS+ABS	666x94x55mm	AC 220-240V,50Hz
VT-12005	7884 7885	2x24W Tube Not included	120°	20,000 Hours	PS+HIPS+PC	1576x94x55mm	AC 220-240V,50Hz

INTRODUCTION & WARRANTY

Thank you for selecting and buying V-TAC product. V-TAC will serve you the best. Please read these instructions carefully before starting the installation and keep this manual handy for future reference. If you have any another query, please contact our dealer or local vendor from whom you have purchased the product. They are trained and ready to serve you at the best. The warranty is valid for 2 years from the date of purchase. The warranty does not apply to damage caused by incorrect installation or abnormal wear and tear. The company gives no warranty against damage to any surface due to incorrect removal and installation of the product. The products are suitable for 10-12 Hours Daily operation. Usage of product for 24 Hours a day would void the warranty. This product is warranted for manufacturing defects only.

WARNING!

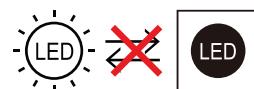
1. Please make sure to turn off the power before starting the installation.
2. . If the external flexible cable or cord of this luminaire is damaged, it shall be exclusively replaced by the manufacturer or his service agent or a similar qualified person in order to avoid a hazard.
3. Installation should only be done by a certified electrician.



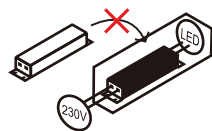
This marking indicates that this product should not be disposed of with other household wastes.



Caution, risk of electric shock.



Non-replaceable light source



Non-replaceable control gear



RoHS

PRODUCT FEATURES

- Transparent PS diffuser with higher light transmittance.
- Opaque HIPS housing with good mechanical performance.
- Input on one side of the housing.

SAFETY INSTRUCTIONS

- Turn the power off.
- Do not discharge with general household waste.
- Return only to the specified recycling points in your area.

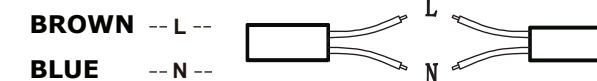
NOTICE

- Starter not required
- Direct Installation
- Tubes not included

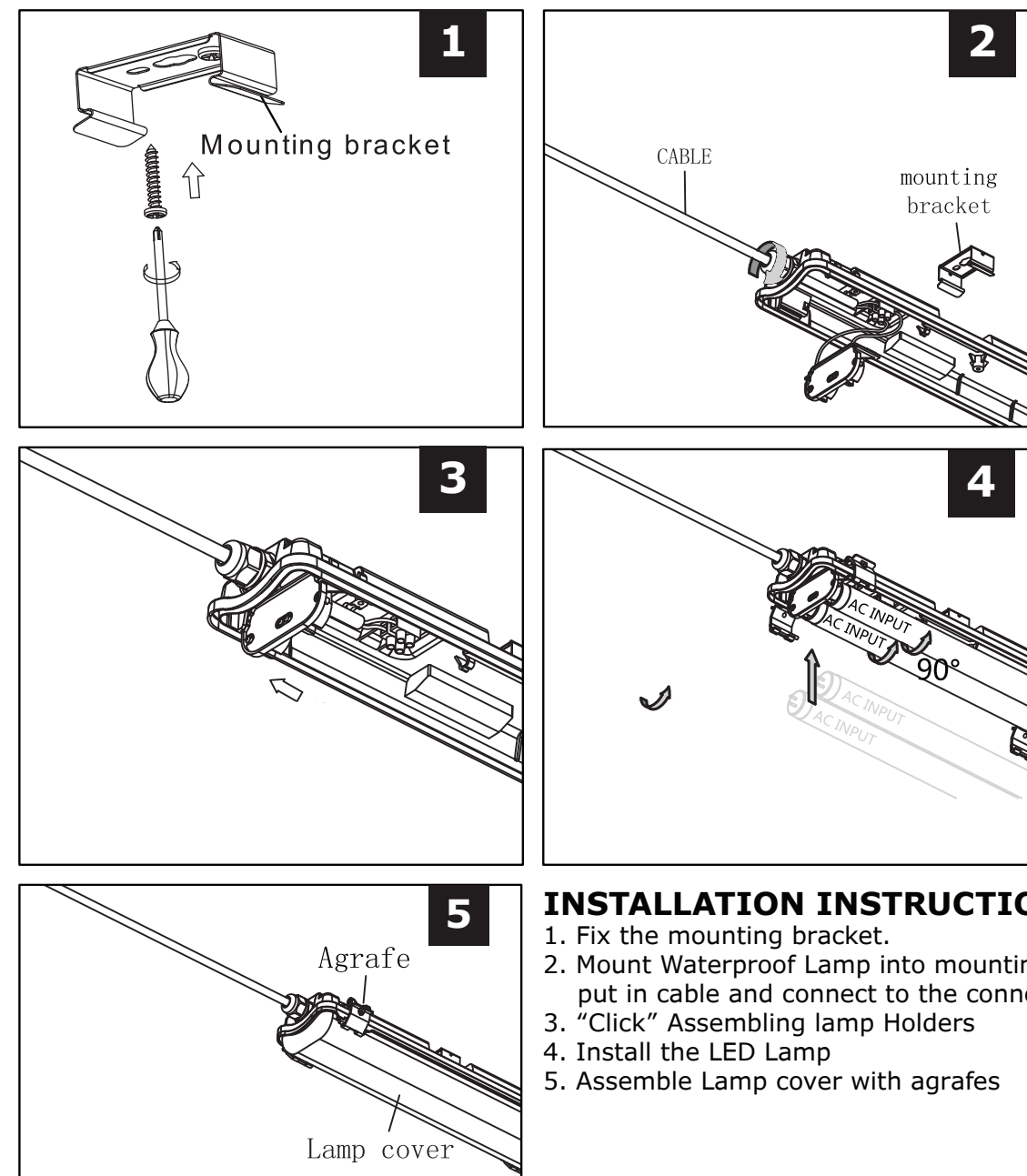
LAMP REPLACEMENT INSTRUCTION

- Unlock the clips and open the diffuser to replace or install the tubes.

WIRING DIAGRAM



INSTALLATION DIAGRAM:



INSTALLATION INSTRUCTIONS

1. Fix the mounting bracket.
2. Mount Waterproof Lamp into mounting brackets put in cable and connect to the connector
3. "Click" Assembling lamp Holders
4. Install the LED Lamp
5. Assemble Lamp cover with agrafes